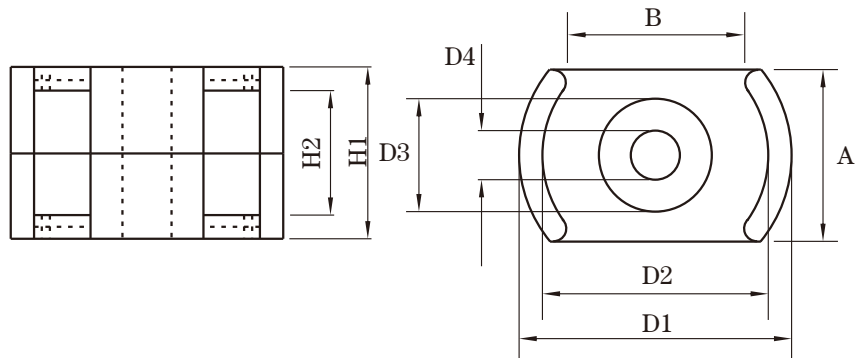


Dimension: (UNIT:mm)

D1	22.4 ^{-0.12}
D2	18.1+0.1
D3	9.4 ^{-0.50}
D4	4.3+0.4
A	10.5
B	15.20 ± 0.25
H1	14 ^{-0.6}
H2	9.20+0.8

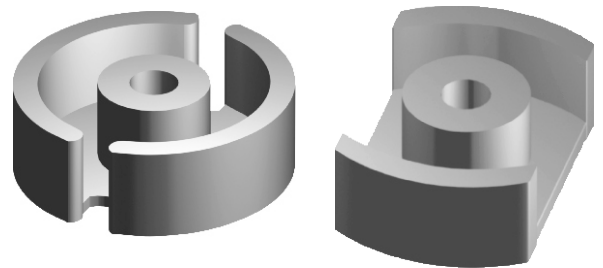


Test conditions

AL: F=1.0KHz U=0.3V N=10Ts

Effective parameter

C1(mm) ⁻¹	Ae(mm ²)	Le(mm)	Ve(mm ³)	Weight(g)
0.47	61.0	28.6	1740	≈12.0



Core sets for general purpose transformers and power applications.

Clamping force for Al measurements, 20+/-5N.

Grade	AL (nH)	μe	AIR GAP μm	Type number
P3	3500±25%		≈0	C2213-P3

Properties of core sets under power conditions

Grade	B (mT) at	Core loss (w) at			
	H=250 A/m F=25KHz T=100°C	F=25 KHz B=200mT T=100°C	f=100 KHz B=100mT T=100°C	F=100 KHz B=200 mT T=100°C	F=400 KHz B=50mT T=100°C
P3	≥320				

Note:

- 1: Document is the property of FUAN Inc & is not allow to be duplicated without authorization
- 2: RoHS compliant.