

# F TYPE ABSORBER CORES & FBP TYPE CORES

F TYPE ABSORBER CORES  
(MATERIALS): R2KF

Dimensions & Effective parameter

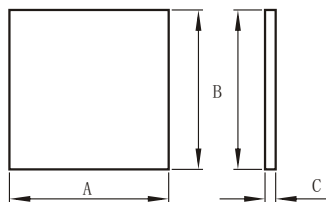


Fig1

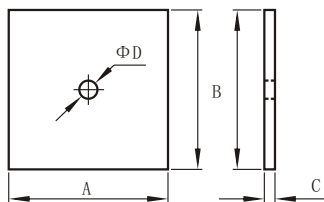


Fig2

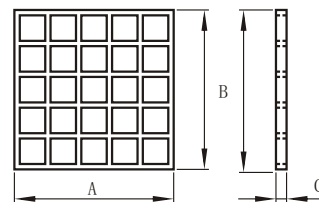
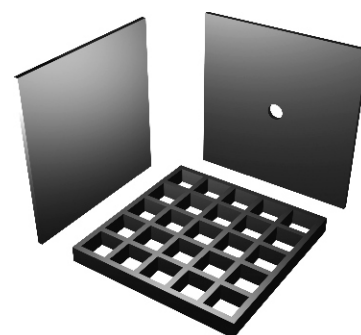


Fig3

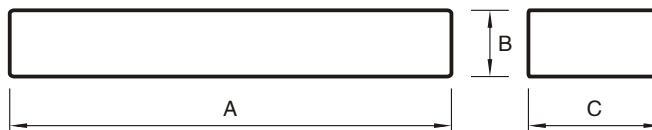
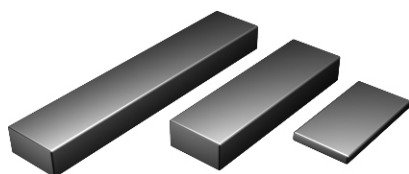
## ABSORBERS

CORES TYPE	Dimensions (mm)					Weight (set/g)	Fig
	A	B	C	D			
F100×100×6.7	100±0.3	100±0.3	6.7±0.3			330	1
F100×100×6.7H	100±0.3	100±0.3	6.7±0.3	10±0.1		315	2
F101×101×19.0	101±0.3	101±0.3	19.0±0.3			242	3
F110×110×6.0	100±0.3	100±0.3	6.0±0.3			300	1
F113×112×6.0	113±1.0	112±1.0	6.0±0.4			380	1



FBP TYPE CORES  
(MATERIALS): R2KF, P2, P3

Dimensions & Effective parameter



CORES TYPE	Dimensions (mm)			Weight (g)
	A	B	C	
FBP-150×25×25	150.0±0.3	25.0±0.2	25.0±0.2	440
FBP-150×15×30	150.0±0.3	15.0±0.2	30.0±0.2	317
FBP-110×15×35	110.0±0.3	15.0±0.2	30.0±0.2	232
FBP-100×15×30	100.0±0.3	15.0±0.2	30.0±0.2	211
FBP-60×30×5	60.0±1.5	30.75±0.75	5.0±1.5	42
FBP-60×30×6.5	60.0±1.5	30.75±0.75	6.75±0.25	55
FBP-60×30×5.75	60.0±1.5	30.75±0.75	6.75±0.25	49
FBP-60×15×4.6	60.0±1.5	15.0±0.3	4.6±0.3	20
FBP-60×15×4.9	60.0±1.5	15.0±0.3	4.6±0.3	21