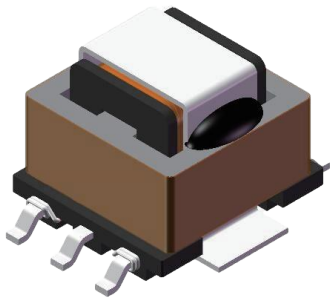


# HIGH FREQUENCY CURRENT SENSING TRANSFORMER

## FACTE8A SERIES



### ELECTRICAL SPECIFICATION

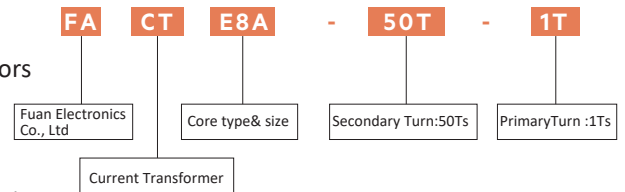
- Temperature Rise Current(Irms):The current when temperature of coil increases up to max.  $\Delta T=40^{\circ}C$ . ( $T_a=20^{\circ}C$ )
- Operating temperature:  $-40^{\circ}C$  to  $+125^{\circ}C$
- L: HP4284A PRECISION LCR METER
- DCR: CHENHWA 502 OHM METER
- Electrical specifications at  $25^{\circ}C$

### FEATURES

- Very low DC resistance
- Different turns ratios
- Small package
- Other pinning on request

### APPLICATIONS

- Power supply for VTRs
- Small surface mount current sensors
- Sensed current up to 30 A;  
Frequency range up to 1MHz
- Very low primary DC resistance
- 1.0KV DC/3mA / 1S isolation (hipot)  
between windings
- LCD televisions、 Notebook PCs、  
Portable communication equipment、  
DC/DC converters,m etc



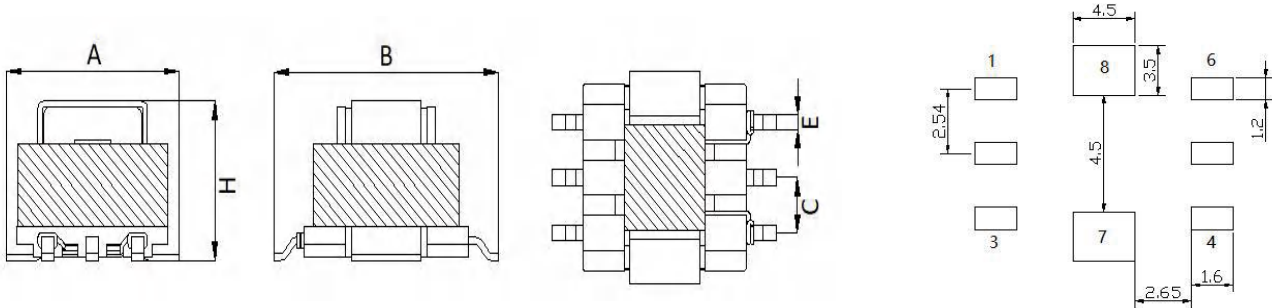
### ELECTRICAL CHARACTERISTICS FORM

Part Number	Turns ratio sec:pri	Secondary Inductance @100KHZ0.1V (mH)MIN	DCR( $\Omega$ )		Sensed Current(A) (Max)
			Sec Max	Pri Ref	
FACTE8A-50T-1T	50:1	0.63	0.60	0.0039	30
FACTE8A-100T-1T	100:1	2.50	3.00	0.0039	30
FACTE8A-150T-1T	150:1	5.63	5.70	0.0039	30
FACTE8A-200T-1T	200:1	10.0	10.0	0.0039	30
FACTE8A-300T-1T	300:1	22.5	25.0	0.0039	30

# Product datasheet

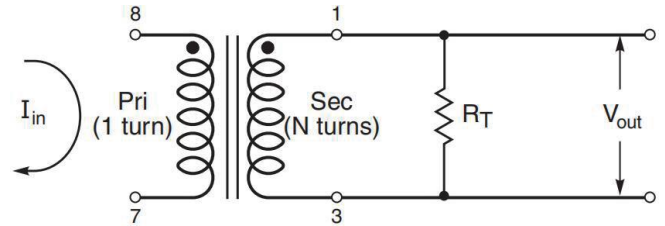
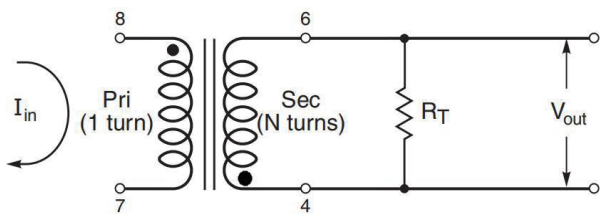
## ELECTRICAL INFORMATION

Dimension in mm



Item	A MAX.	B MAX.	H MAX.
FACTE8A	9.70	12.80	7.00

Item	C	E			
FACTE8A	2.50	1.00			



## CURRENT VS TEMPERATURE RISE

