

Quad port transformer modules 40Pin series

FEATURES

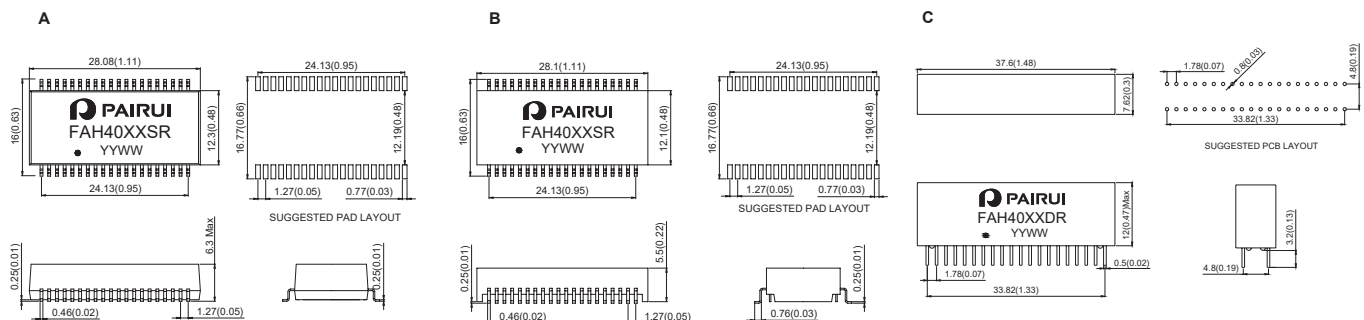
Compliant with IEEE 802.3 standard.
Designed for multiport repeater & Ethernet Switching Hub application
Primary inductance:350uH Min.@ 100KHz,0.1Vrms,8mA
RoHS compliant



Electrical Specification@25°C Operating Temperature 0 to 70°C

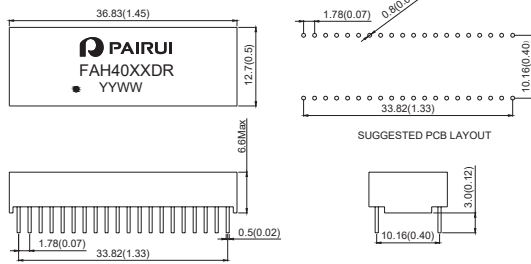
Part Number	Insertion Loss (dB Max) 1-100MHz	Return Loss (dB Typical) MHz				CMRR (dB Min) MHz		Cross talk (dB Min) MHz		Isolation Voltage (Vrms Min)	Package
		1-30	40	50	60-80	0.1-60	60-100	0.1-60	60-100		
FAH4001SR	-1.0	-18	-14.4	-13.1	-12	-42	-40	-40	-38	1500	B
FAH4002SR	-1.0	-18	-14.4	-13.1	-12	-42	-40	-40	-38	1500	B
FAH4003SR	-1.0	-18	-14.4	-13.1	-12	-42	-40	-40	-38	1500	A
FAH4004SR	-1.0	-18	-14.4	-13.1	-12	-42	-40	-40	-38	1500	A
FAH4005SR	-1.0	-18	-14.4	-13.1	-12	-42	-40	-40	-38	1500	B
FAH4006SR	-1.0	-18	-14.4	-13.1	-12	-42	-40	-40	-38	1500	B
FAH4007SR	-1.0	-18	-14.4	-13.1	-12	-42	-40	-40	-38	1500	B
FAH4001DR	-1.0	-18	-14.4	-13.1	-12	-42	-40	-40	-38	1500	C
FAH4002DR	-1.0	-18	-14.4	-13.1	-12	-42	-40	-40	-38	1500	C
FAH4003DR	-1.0	-18	-14.4	-13.1	-12	-42	-40	-40	-38	1500	C
FAH4004DR	-1.0	-18	-14.4	-13.1	-12	-42	-40	-40	-38	1500	C
FAH4005DR	-1.0	-18	-14.4	-13.1	-12	-42	-40	-40	-38	1500	C
FAH4006DR	-1.0	-18	-14.4	-13.1	-12	-42	-40	-40	-38	1500	D
FAH4007DR	-1.0	-18	-14.4	-13.1	-12	-42	-40	-40	-38	1500	D
FAH4008DR	-1.0	-18	-14.4	-13.1	-12	-42	-40	-40	-38	1500	D
FAH4009DR	-1.0	-18	-14.4	-13.1	-12	-42	-40	-40	-38	1500	D
FAH4010DR	-1.0	-18	-14.4	-13.1	-12	-42	-40	-40	-38	1500	C
FAH4011DR	-1.0	-18	-14.4	-13.1	-12	-42	-40	-40	-38	1500	E
FAH4012DR	-1.0	-18	-14.4	-13.1	-12	-42	-40	-40	-38	1500	C

Dimension : mm[inch]+/-0.25[0.01]

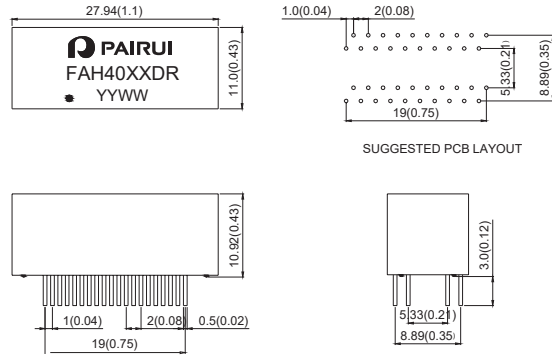


Dimension : mm[inch]+/-0.25[0.01]

D

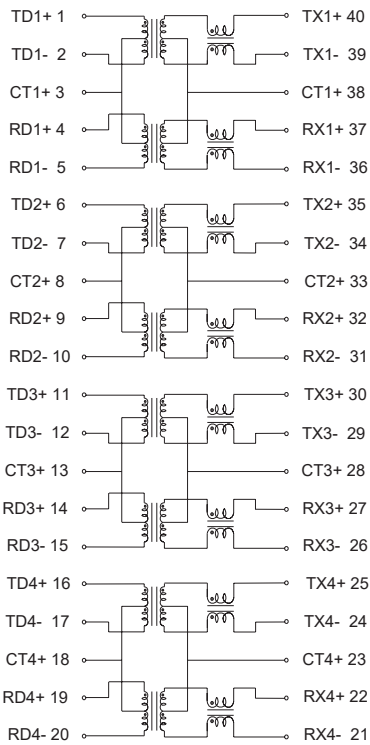


E

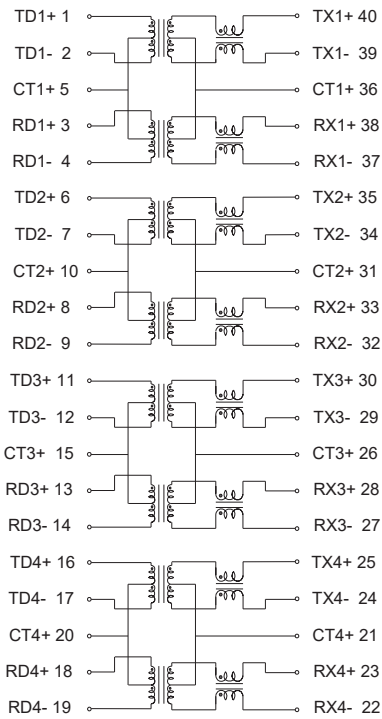


Schematic

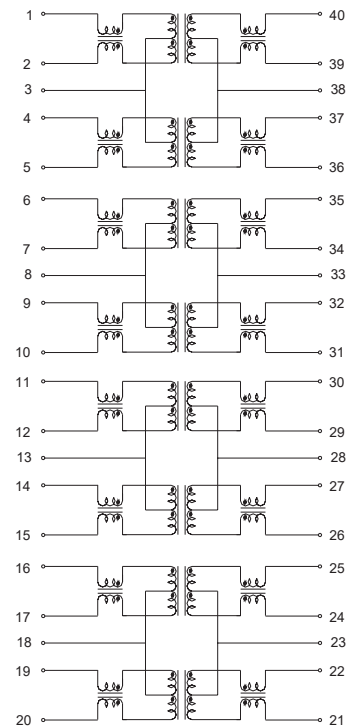
FAH4001SR, FAH4003SR, FAH4002DR, FAH4007DR, FAH4011DR



FAH4005SR, FAH4001DR

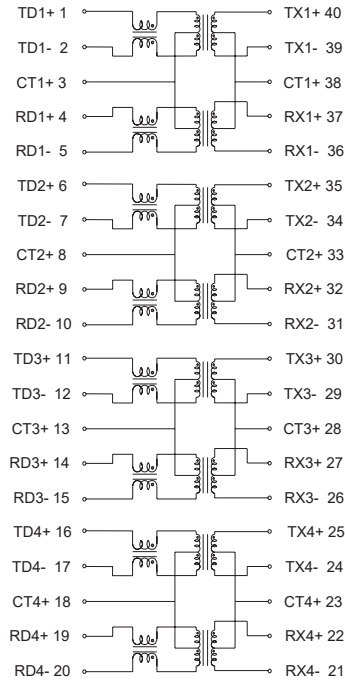


FAH4006DR

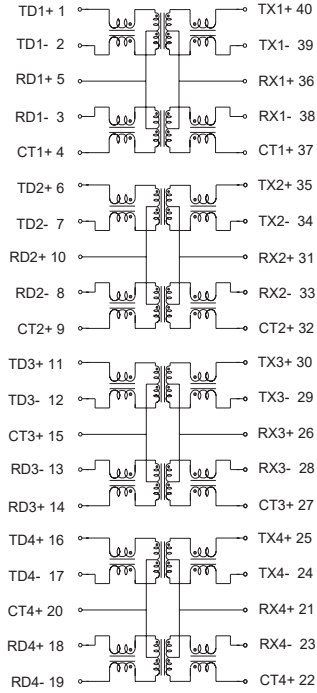


Schematic

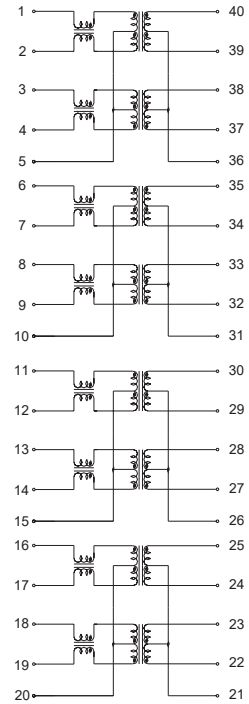
**FAH4002SR,FAH4004SR,FAH4006DR,
FAH4008DR**



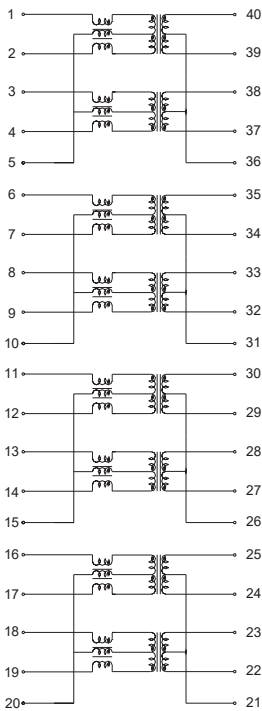
**FAH4006SR,FAH4004DR,
FAH4009DR**



FAH4010DR



FAH4012DR



FAH4007SR,FAH4005DR

